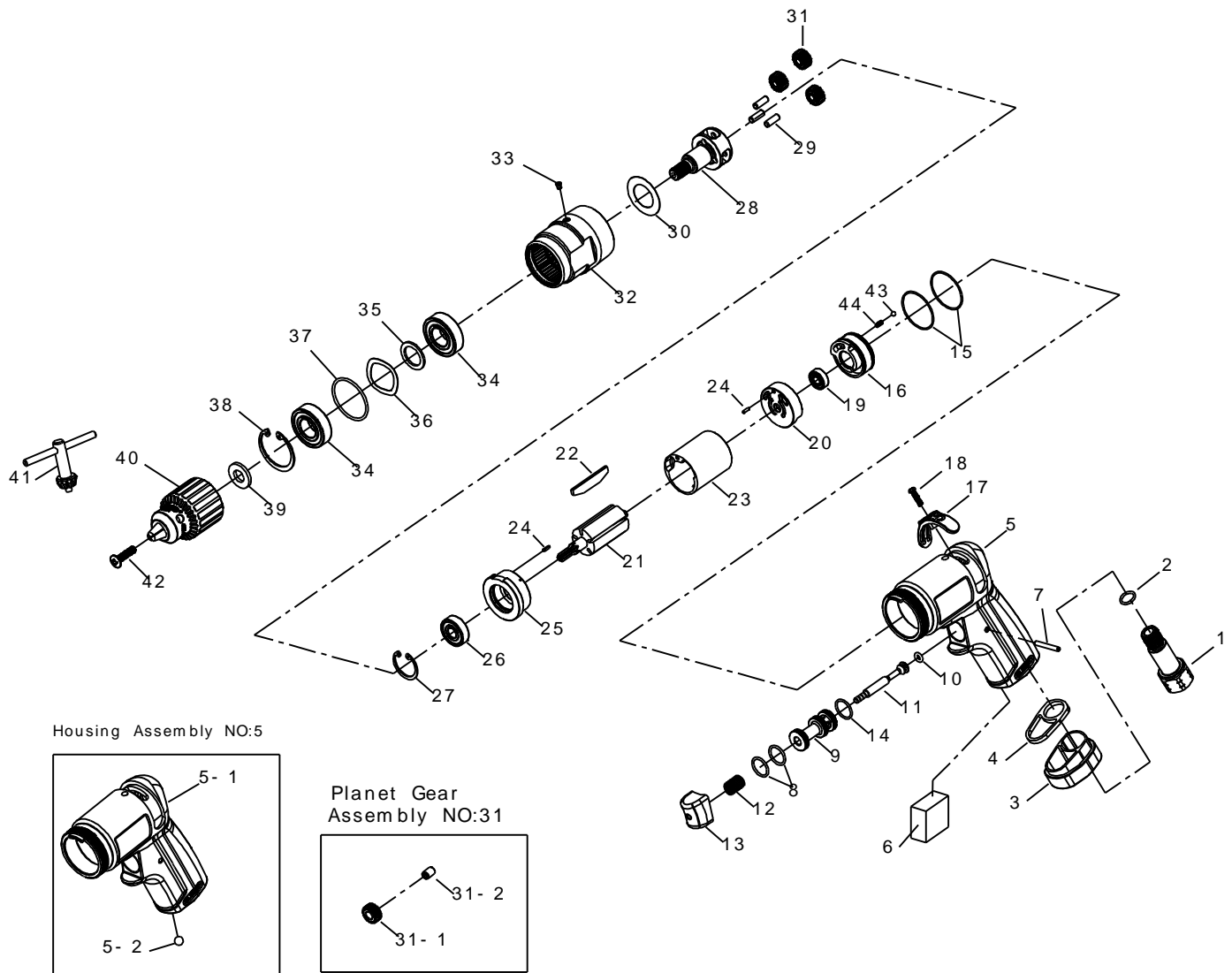


# 3/8" SUPER DUTY REVERSESEIBLE AIR DRILL



## 5318

INDEX NO.	DESCRIPTION	REQ'D NO.	INDEX NO.	DESCRIPTION	REQ'D NO.
1	Air Inlet	1	24	Spring Pin	2
2	O-Ring	1	25	Front End Plate	1
3	Exhaust Deflector	1	26	Ball Bearing	1
4	Washer	1	27	Retainer	1
★ 5	Housing Assembly ( incl.5-1.5-2 )	1	28	Work Spinder	1
● 5-1	Motor Housing	1	29	Pin	3
● 5-2	Steel Ball	1	30	Spacer	1
6	Muffler Element	1	★ 31	Planet Gear Assembly ( incl.31-1.31-2 )	3
7	Pin	1	● 31-1	Planet Gear	3
8	O-Ring	2	● 31-2	Bushing	3
9	Throttle Valve Seat	1	★ 32	Gear Housing Assembly ( incl.33 )	1
10	O-Ring	1	● 33	Grease Fitting	1
11	Valve Stem	1	34	Ball Bearing	2
12	Spring	1	35	Washer	1
13	Trigger	1	36	Washer	1
14	O-Ring	1	37	O-Ring	1
15	O-Ring	2	38	Retainer	1
16	Reverse Valve	1	39	Washer	1
17	Reverse Valve Knob	1	★ 40	3/8" Chuck Assembly ( incl.41 )	1
18	Screw	1	● 41	Chuck Key	1
19	Ball Bearing	1	42	Screw	1
20	Rear End Plate	1	43	Steel Ball	1
21	Rotor	1	44	Spring	1
22	Rotor Blade	5	TK	Tune-Up Kit { incl.2.6.8 ( 2 ).10.12.14.15 ( 2 ).22 ( 5 ).37.43.44 }	
23	Cylinder	1			

★ Must be Purchased in Assembly Set

● Recommended not to be purchased alone due to assembly difficulty

20150507R2