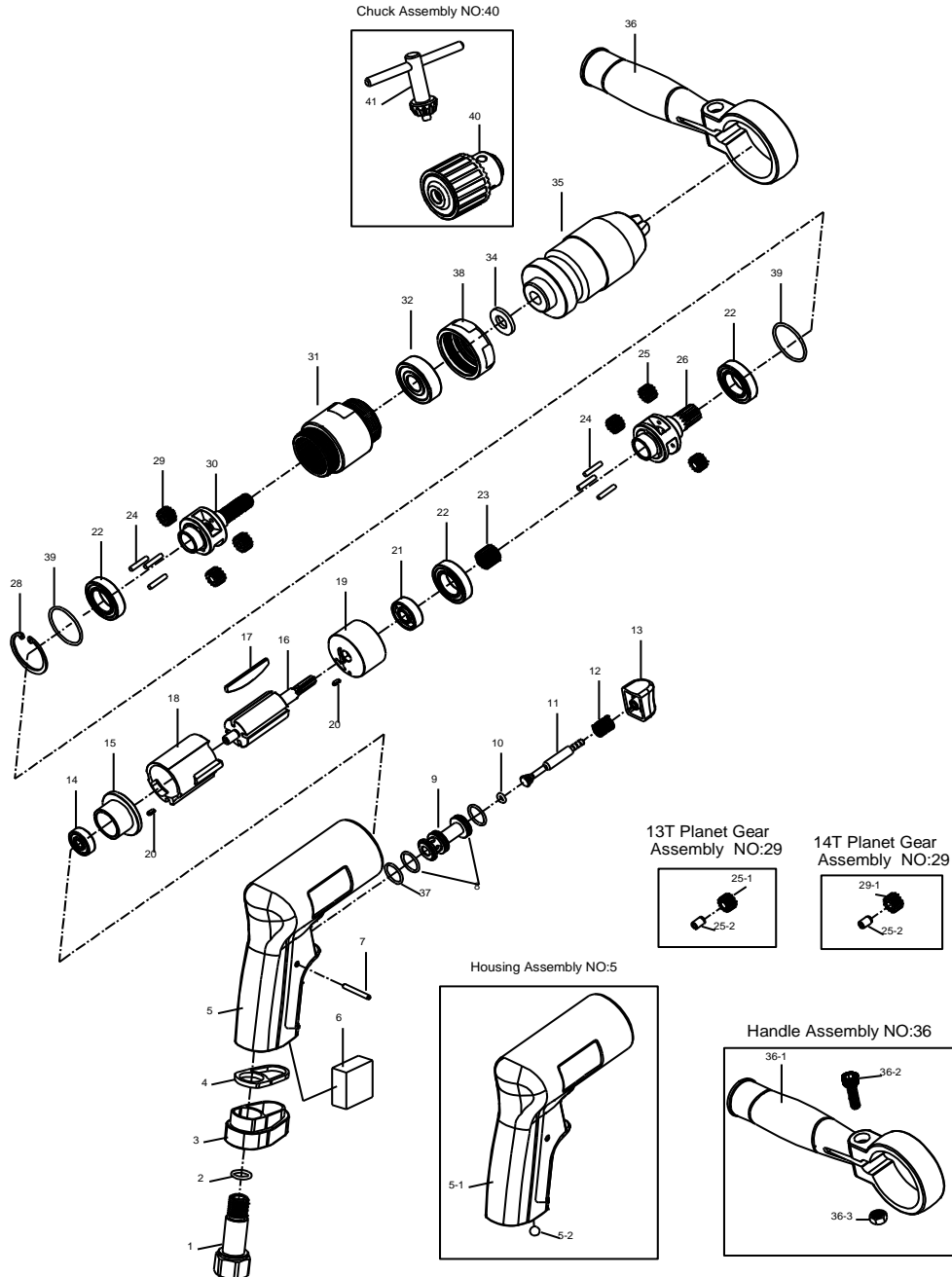


1/2" SUPER DUTY AIR DRILL



5413

INDEX NO.	DESCRIPTION	REQ'D NO.	INDEX NO.	DESCRIPTION	REQ'D NO.
1	Air Inlet	1	23	Main Gear	1
2	O-Ring	1	24	Pin	6
3	Exhaust Deflector	1	★ 25	Planet Gear Assembly { incl.25-1(3).25-2(3) }	3
4	Washer	1	● 25-1	Planet Gear	3
★ 5	Housing Assembly (incl.5-1.5-2)	1	● 25-2	Bushing	6
● 5-1	Motor Housing	1	26	Work Spinder	1
● 5-2	Steel Ball	1	28	Retainer	1
6	Muffler Element	1	★ 29	Planet Gear Assembly { incl.25-2(3).29-1(3) }	3
7	Pin	1	● 29-1	Planet Gear	3
8	O-Ring	2	30	Work Spinder	1
9	Throttle Valve Seat	1	31	Gear Housing	1
10	O-Ring	1	32	Ball Bearing	1
11	Throttle Valve Plunger	1	34	Washer	1
12	Spring	1	35	Keyless Chuck (Option)	1
13	Trigger	1	★ 36	Handle Assembly (incl.36-1.36-2.36-3)	1
14	Ball Bearing	1	● 36-1	Handle	1
15	Rear End Plate	1	● 36-2	Lock Nut	1
16	Rotor	1	● 36-3	Screw	1
17	Rotor Blade	4	37	O-Ring	1
18	Cylinder	1	38	Bearing Washer	1
19	Front End Plate	1	39	O-Ring	2
20	Spring Pin	2	40	3/8"Chuck Assembly (incl.41) (Option)	1
21	Ball Bearing	1	41	Chuck Key	1
22	Ball Bearing	3	TK	Tune-Up Kit { 2.6.8 (2).10.12.14.17(4).21.22(3).32.37.39(2) }	

★ Must be Purchased in Assembly Set

● Recommended not to be purchased alone due to assembly difficulty

20160910R2