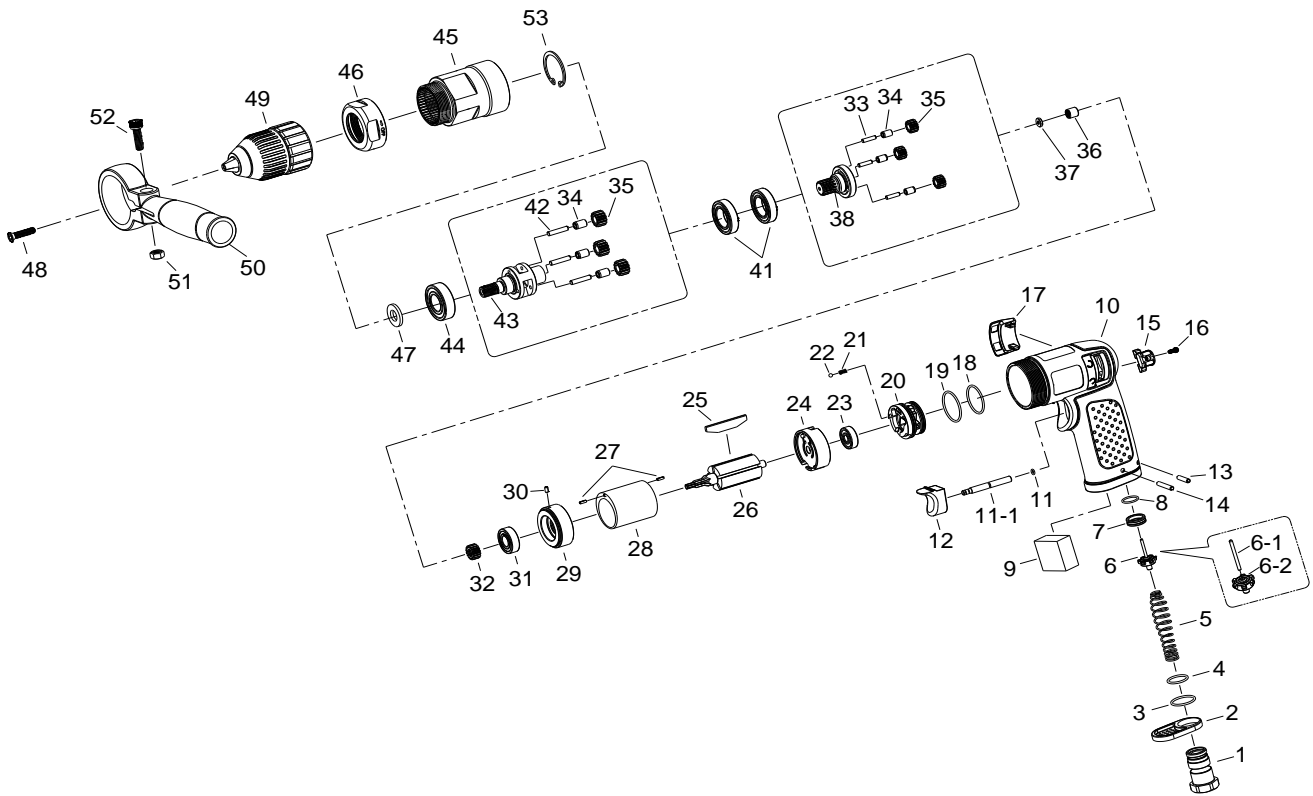


1/2" SUPER DUTY AIR DRILL



5420

INDEX NO.	DESCRIPTION	REQ'D NO.	INDEX NO.	DESCRIPTION	REQ'D NO.
1	Air Inlet	1	26	Rotor	1
2	Exhaust Deflector	1	27	Spring Pin	2
3	O-Ring	1	28	Cylinder	1
4	O-Ring	1	29	Front End Plate	1
5	Spring	1	30	Spring Pin	1
★ 6	Throttle Valve Assembly (incl.6-1.6-2)	1	31	Ball Bearing	1
● 6-1	Throttle Valve Pin	1	32	Pinion Gear	1
● 6-2	Throttle Valve	1	● 33	Pin	3
★ 7	Throttle Valve Seat Assembly (incl.8)	1	● 34	Bushing	6
● 8	O-Ring	1	● 35	Planet Gear	6
9	Muffler Element	1	36	Needle Roller Bearing	1
10	Motor Housing	1	37	Bearing Washer	1
11	O-Ring	1	★ 38	Work Spinder Assembly { incl.33.34 (3).35 (3) }	1
● 11-1	Trigger Pin	1	41	Ball Bearing	2
★ 12	Trigger Assembly (incl.11-1)	1	● 42	Pin	3
13	Spring Pin	1	★ 43	Work Spinder Assembly { incl.34 (3).35 (3).42 }	1
14	Spring Pin	1	44	Ball Bearing	1
15	Reverse Valve Knob	1	45	Gear Housing	1
16	Screw	1	46	Bearing Washer	1
17	Reverse Plate	1	47	Washer	1
18	O-Ring	1	48	Screw	1
19	O-Ring	1	49	Keyless Chuck	1
20	Reverse Valve	1	★ 50	Side Spade Handle Assembly (incl.51.52)	1
21	Spring	1	● 51	Lock Nut	1
22	Steel Ball	1	● 52	Screw	1
23	Ball Bearing	1	53	Retainer	1
24	Rear End Plate	1			
25	Rotor Blade	5	TK	Tune-Up Kit { incl.3.4.5.8.9.11.18.19.21.22.25 (5) }	

★ Must be Purchased in Assembly Set

● Recommended not to be purchased alone due to assembly difficulty

20131009R1