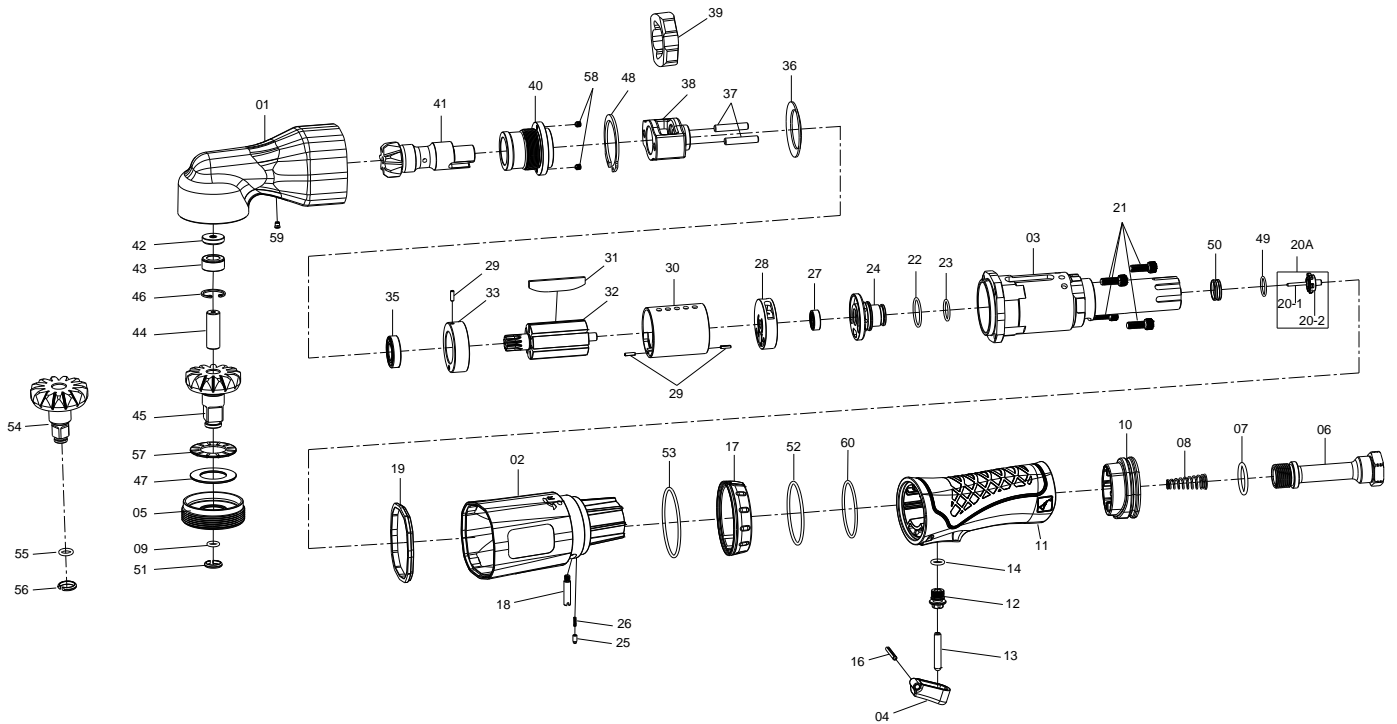


1/2" & 3/8" SQ. DR. SUPER DUTY AIR ANGLE IMPACT WRENCH



1375-A_1475-A

INDEX NO.	DESCRIPTION	REQ'D NO.	INDEX NO.	DESCRIPTION	REQ'D NO.
★ 01	Hammer Case Assembly (incl. 42.43.59)	1	33	End Plate	1
02	Housing	1	35	Bearing	1
03	Motor Housing	1	36	Washer	1
04	Trigger	1	37	Hammer Pin	2
05	Lock Ring	1	38	Hammer Frame	1
06	Air Inlet	1	39	Hammer	1
07	O-Ring	1	40	Bushing	1
08	Spring	1	41	Work Spindle	1
10	Exhaust Deflector	1	● 42	Washer	1
11	Motor Housing	1	● 43	Hammer Case Bushing	1
12	Bushing	1	44	Pin	1
13	Valve Stem	1	46	Retainer	1
14	O-Ring	1	47	Thrust Washer	1
16	Spring Pin	1	48	Retainer	1
17	Reverse Knob	1	49	O-Ring	1
18	Pin	1	50	Throttle Valve Seat	1
19	Gasket	1	52	O-Ring	1
★ 20A	Throttle Valve Assembly (incl. 20A-1.20A-2)	1	53	O-Ring	1
● 20A-1	Pin	1	57	Needle Bearing	1
● 20A-2	Throttle Valve	1	58	Screw	2
21	Screw	4	● 59	Grease Fitting	1
22	O-Ring	1	60	Gasket	1
23	O-Ring	1	1475-A		
24	Reverse Valve	1	09	O-Ring	1
25	Pin	1	45	Standard Anvil	1
26	Spring	1	51	Socket Retainer	1
27	Bearing	1	1375-A		
28	End Plate	1	54	Standard Anvil	1
29	Spring Pin	3	55	O-Ring	1
30	Cylinder	1	56	Socket Retainer	1
31	Rotor Blade	7	TK1	Tune-Up Kit { incl. 7.8.9.14.19.22.23.26.31 (7) .49.51.52.53.60 } (for KI-1475-A)	
32	Rotor	1	TK2	Tune-Up Kit { incl. 7.8.14.19.22.23.26.31 (7) .49.52.53.55.56.60 } (for KI-1375-A)	

★ Must be Purchased in Assembly Set

● Recommended not to be purchased alone due to assembly difficulty