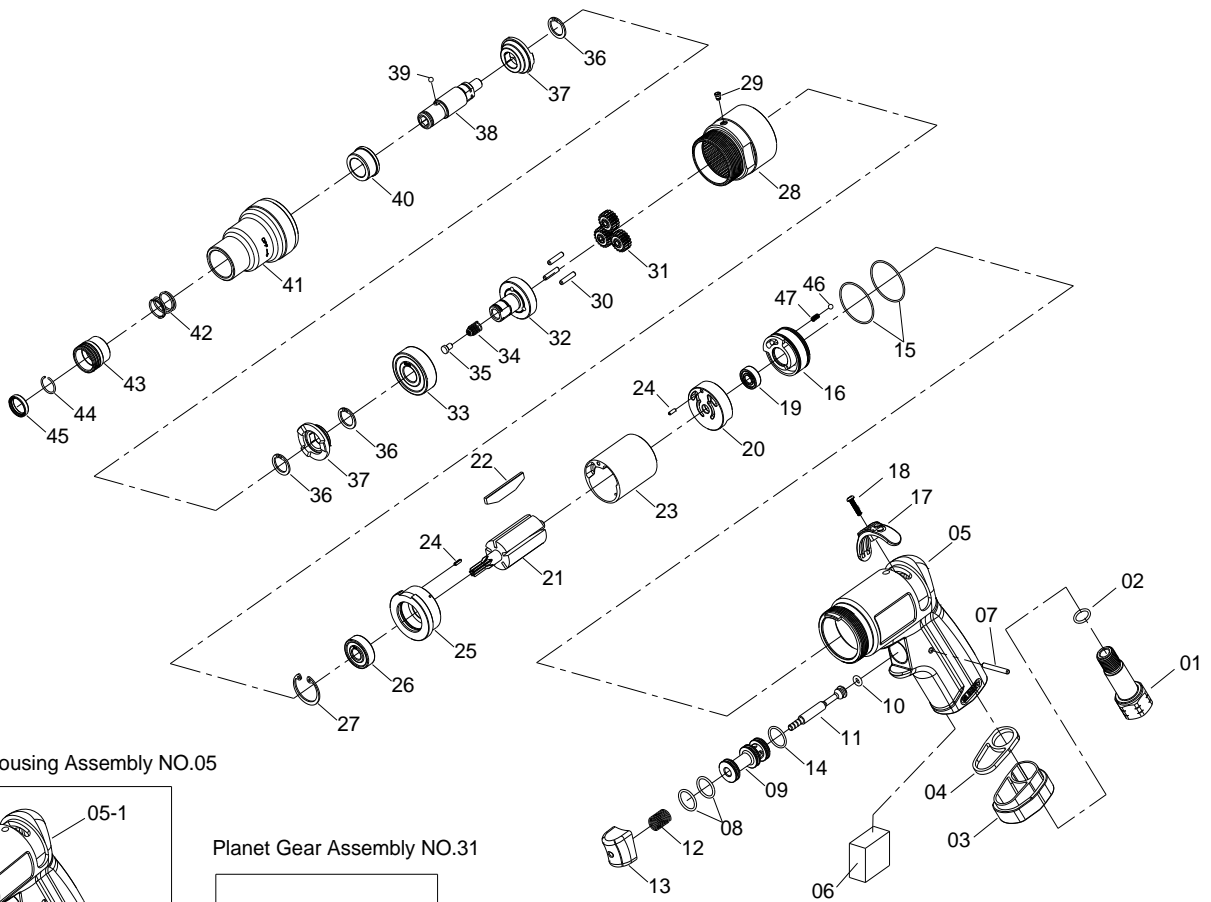
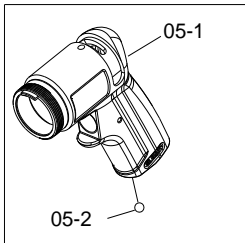


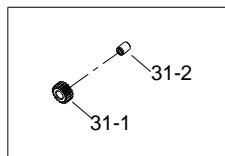
# 1/4" HEX. SUPER DUTY SCREWDRIVER



Motor Housing Assembly NO.05



Planet Gear Assembly NO.31



## 3270

INDEX NO.	DESCRIPTION	REQ'D NO.	INDEX NO.	DESCRIPTION	REQ'D NO.
1	Air Inlet	1	25	Front End Plate	1
2	O-Ring	1	26	Ball Bearing	1
3	Exhaust Deflector	1	27	Retainer	1
4	Washer	1	28	Gear Housing	1
★ 5	Housing Assembly ( incl.5-1.5-2 )	1	29	Grease Fitting	1
● 5-1	Motor Housing	1	30	Pin	3
● 5-2	Steel Ball	1	★ 31	Planet Gear Assembly ( incl.31-1.31-2 )	3
6	Muffler Element	1	● 31-1	Planet Gear	3
7	Pin	1	● 31-2	Bushing	3
8	O-Ring	2	32	Work Spinder	1
9	Throttle Valve Seat	1	33	Ball Bearing	1
10	O-Ring	1	34	Spring	1
11	Throttle Valve Plunger	1	35	Spindle Guide	1
12	Spring	1	36	Retainer	3
13	Trigger	1	37	Hammer	2
14	O-Ring	1	38	Cam Spindle	1
15	O-Ring	2	39	Steel Ball	1
16	Reverse Valve	1	40	Bushing	1
17	Reverse Valve Knob	1	41	Hammer Case	1
18	Screw	1	42	Spring	1
19	Ball Bearing	1	43	Release Sleeve	1
20	Rear End Plate	1	44	Socket Retainer	1
21	Rotor	1	45	Washer	1
22	Rotor Blade	5	46	Steel Ball	1
23	Cylinder	1	47	Spring	1
24	Spring Pin	2	TK	Tune-Up Kit { incl.2.6.8 ( 2 ).10.12.14.15 ( 2 ).19.22 ( 5 ).26.33.42.46.47 }	

★ Must be Purchased in Assembly Set

● Recommended not to be purchased alone due to assembly difficulty

20140516R1