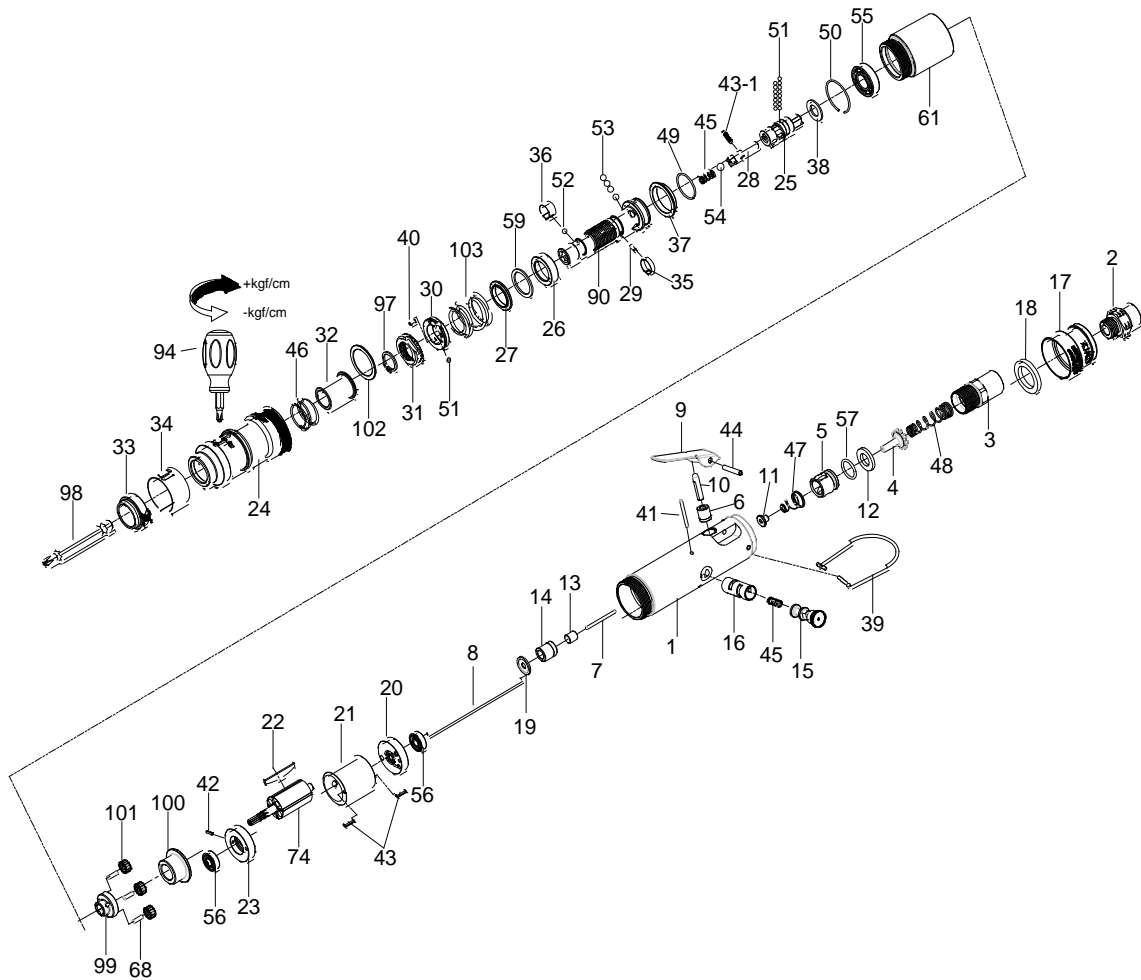


1/4" HEX. SUPER DUTY FULL-AUTO SHUT OFF AIR SCREWDRIVER



33023SLUA

INDEX NO.	DESCRIPTION	REQ'D NO.	INDEX NO.	DESCRIPTION	REQ'D NO.
★ 1	Housing Assembly (incl.14.16)	1	37	Ball Holder	1
2	Air Inlet	1	38	Washer	1
3	Air Inlet	1	39	Hanger	1
4	Throttle Valve	1	40	Pin	1
5	Bushing	1	41	Pin	1
● 6	Bushing	1	42	Spring Pin	1
● 7	Pin	1	43	Spring Pin	2
8	Throttle Valve Plunger	1	43-1	Pin	1
9	Trigger	1	44	Spring Pin	1
10	Valve Stem	1	45	Spring	2
11	Shot-Off Valve	1	● 46	Spring	1
12	Washer	1	47	Spring	1
★ 13	Reverse Valve Assembly (incl.7)	1	48	Spring	1
● 14	Bushing	1	49	Retainer	1
15	Reverse Valve	1	50	Retainer	1
● 16	Valve Bushing	1	51	Steel Ball	17
17	Exhaust Deflector	1	52	Steel Ball	1
18	Muffler Element	1	53	Steel Ball	4
19	Washer	1	54	Steel Ball	1
20	Rear End Plate	1	55	Ball Bearing	1
21	Cylinder	1	56	Ball Bearing	2
22	Rotor Blade	4	57	O-Ring	1
23	Front End Plate	1	59	Gasket	1
★ 24	Hammer Case Assembly (incl.32.33.46.102)	1	61	Gear Housing	1
25	Cam Spindle	1	68	Pin	3
26	Cam Ring	1	74	Rotor	1
27	Spring Collar	1	90	Standard Anvil	1
28	Driving Shaft	1	94	Screwdriver	1
29	Pin	1	97	Retainer	1
30	Adjustment Lock Ring	1	98	Bit (Option)	1
31	Adjustment Nut	1	99	Front Gear Head	1
● 32	Bushing	1	100	Washer	1
● 33	Retainer	1	101	Planet Gear	3
34	Adjustment Cover	1	● 102	Washer	1
35	Band	1	103	Spring	1
36	Band	1	TK	Tune-Up Kit { incl.18.22 (4).45 (2).46.47.48.51 (17).52.53 (4).54.57.59.103 }	

★ Must be Purchased in Assembly Set

20140429R2

● Recommended not to be purchased alone due to assembly difficulty