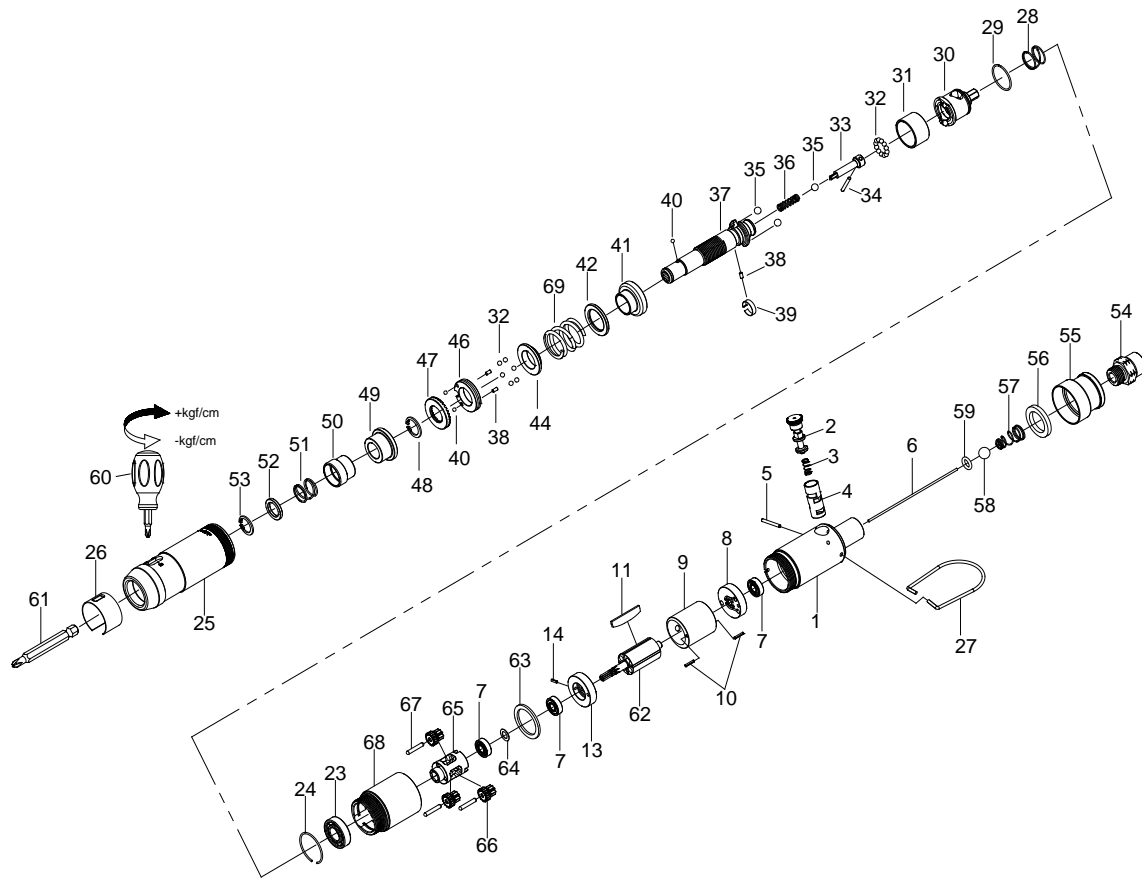


1/4" HEX. SUPER DUTY FULL-AUTO SHUT OFF AIR SCREWDRIVER



33017STWA

INDEX NO.	DESCRIPTION	REQ'D NO.	INDEX NO.	DESCRIPTION	REQ'D NO.
★ 1	Housing Assembly (incl. 4)	1	40	Steel Ball	3
2	Reverse Valve	1	41	Central Clutch	1
3	Spring	1	42	Washer	1
● 4	Reverse Valve Bushing	1	44	Spring Holder	1
5	Pin	1	46	Adjustment Lock Ring	1
6	Throttle Valve Plunger	1	47	Adjustment Nut	1
7	Bearing	2	48	Retainer	1
8	Rear End Plate	1	49	Bushing	1
9	Cylinder	1	50	Bit Sleeve	1
10	Pin	2	51	Spring	1
11	Rotor Blade	4	52	Washer	1
13	Front End Plate	1	53	Retainer	1
14	Pin	1	54	Air Inlet	1
23	Bearing	1	55	Exhaust Deflector	1
24	Retainer	1	56	Muffler Element	1
25	Hammer Case	1	57	Spring	1
26	Adjustment Cover	1	58	Steel Ball	1
27	Hanger	1	59	O-Ring	1
28	Spring	1	60	Screwdriver	1
29	Snap Ring	1	61	Bit (Option)	
30	Cam Spindle	1	62	Rotor	1
31	Ball Holder	1	63	Washer	1
32	Steel Ball	18	64	Spacer	1
33	Driving Shaft	1	65	Spindle	1
34	Pin	1	66	Planet Gear	3
35	Steel Ball	3	67	Pin	3
36	Spring	1	68	Gear Housing	1
37	Standard Anvil	1	69	Spring	1
38	Pin	3	TK	Tune-Up Kit { incl. 3.11 (4) .28.32 (18) .35 (3) .36.40 (3) .51.56.56.57.58.59.69 }	
39	Band	1			

★ Must be Purchased in Assembly Set

● Recommended not to be purchased alone due to assembly difficulty