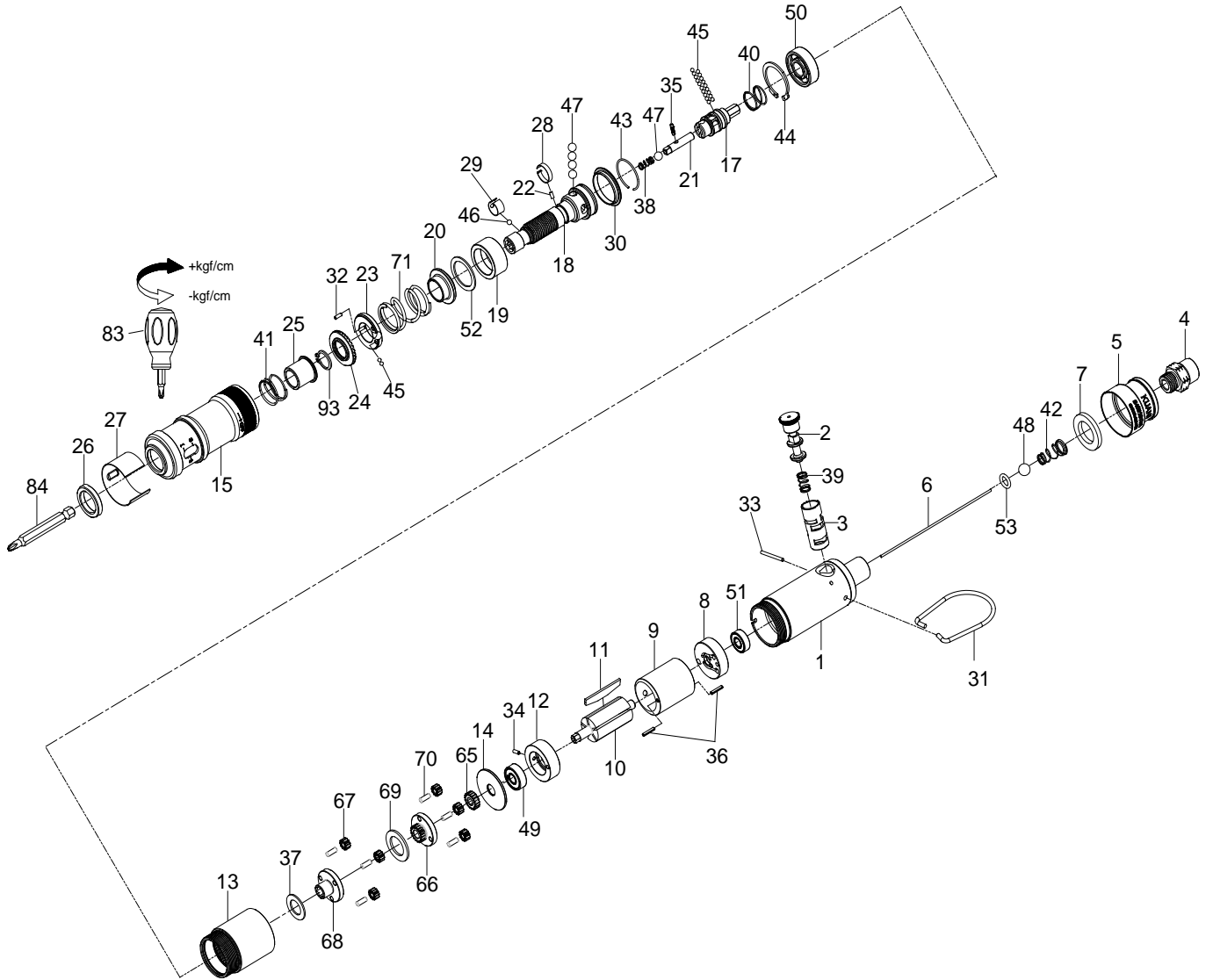


# 1/4" Hex. SUPER DUTY FULL-AUTO SHUT OFF AIR SCREWDRIVER



## 34015STUA

INDEX NO.	DESCRIPTION	REQ'D NO.	INDEX NO.	DESCRIPTION	REQ'D NO.
★ 1	Housing Assembly ( incl.3 )	1	34	Spring Pin	1
2	Reverse Valve	1	35	Pin	1
● 3	Reverse Valve Bushing	1	36	Spring Pin	2
4	Air Inlet	1	37	Gasket	1
5	Exhaust Deflector	1	38	Spring	1
6	Throttle Valve Plunger	1	39	Spring	1
7	Muffler Element	1	40	Spring	1
8	Rear End Plate	1	41	Spring	1
9	Cylinder	1	42	Spring	1
10	Rotor	1	43	Retainer	1
11	Rotor Blade	5	44	Retainer	1
12	Front End Plate	1	45	Steel Ball	21
13	Gear Housing	1	46	Steel Ball	1
14	Washer	1	47	Steel Ball	5
15	Hammer Case	1	48	Steel Ball	1
17	Cam Spindle	1	49	Ball Bearing	1
18	Standard Anvil	1	50	Ball Bearing	1
19	Cam Ring	1	51	Ball Bearing	1
20	Spring Collar	1	52	Gasket	1
21	Driving Shaft	1	53	O-Ring	1
22	Pin	1	65	Pinion Gear	1
23	Adjustment Lock Ring	1	66	Work Spinder	1
24	Adjustment Nut	1	67	Planet Gear	6
25	Bushing	1	68	Work Spinder	1
26	Retainer	1	69	Washer	1
27	Adjustment Cover	1	70	Pin	6
28	Band	1	71	Spring	1
29	Band	1	83	Screwdriver	1
30	Ball Holder	1	84	Bit ( Option )	
31	Hanger	1	93	Retainer	1
32	Pin	1	TK	Tune-Up Kit { incl.7.11 ( 5 ) .37.38.39.40.41.42.45 ( 21 ).46.	
33	Pin	1		47 ( 5 ).48.52.53.71 }	

★ Must be Purchased in Assembly Set

● Recommended not to be purchased alone due to assembly difficulty