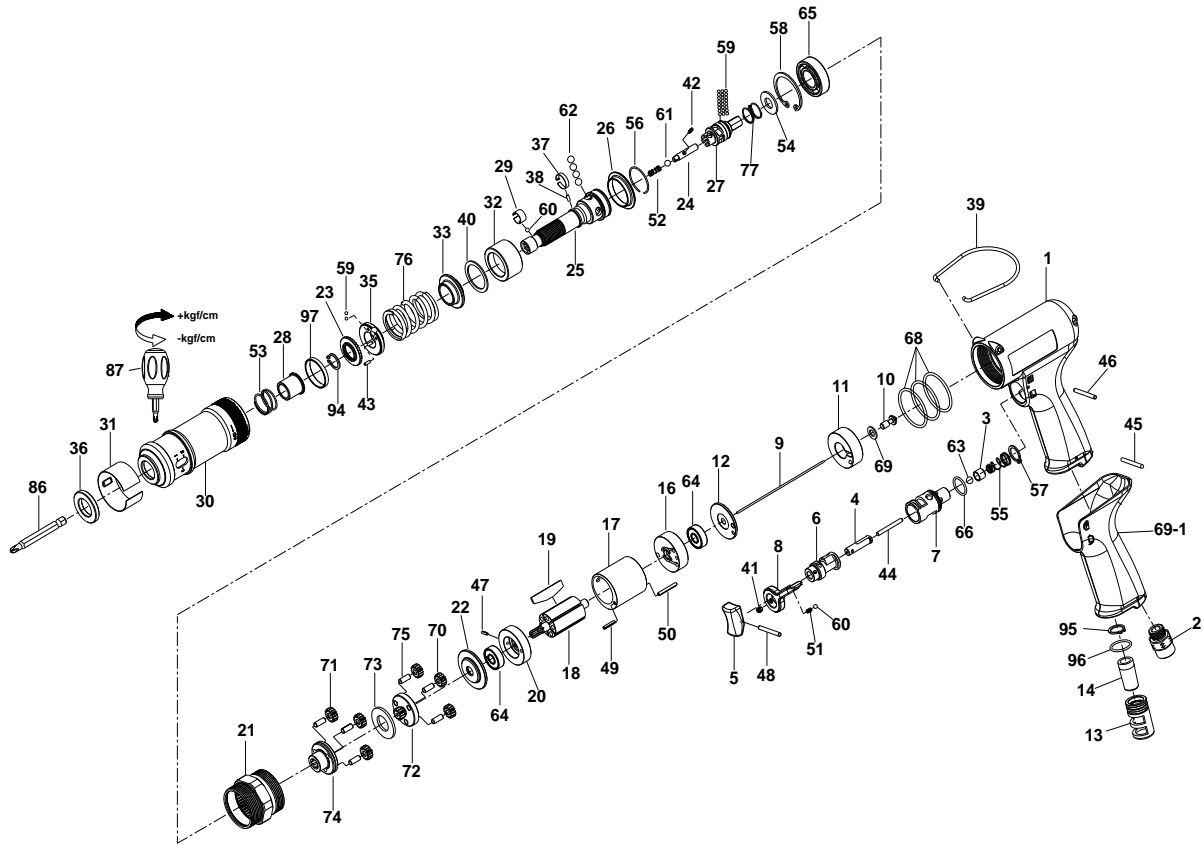


# 1/4" Hex. SUPER DUTY FULL-AUTO SHUT OFF AIR SCREWDRIVER



## 35105PLUA

INDEX NO.	DESCRIPTION	REQ'D NO.	INDEX NO.	DESCRIPTION	REQ'D NO.
1	Housing	1	44	Pin	1
2	Air Inlet	1	45	Pin	1
3	Throttle Valve	1	46	Pin	1
4	Trigger Pin	1	47	Spring Pin	1
5	Trigger	1	48	Spring Pin	1
6	Reverse Valve	1	49	Spring Pin	1
7	Reverse Valve Bushing	1	50	Spring Pin	1
8	Reverse Knob	1	51	Spring	1
9	Throttle Valve Plunger	1	52	Spring	1
10	Shut-off Valve	1	53	Spring	1
11	Handle Bushing	1	54	Gasket	1
12	Rear Plate Space	1	55	Spring	1
13	Exhaust Deflector	1	56	Retainer	1
14	Muffler Element	1	57	Retainer	1
16	Rear End Plate	1	58	Retainer	1
17	Cylinder	1	59	Steel Ball	24
18	Rotor	1	60	Steel Ball	2
19	Rotor Blade	5	61	Steel Ball	1
20	Front End Plate	1	62	Steel Ball	4
21	Gear Housing	1	63	Steel Ball	1
22	Washer	1	64	Ball Bearing	2
23	Adjustment Lock Ring	1	65	Ball Bearing	1
24	Driving Shaft	1	66	O-Ring	1
25	Standard Anvil	1	68	O-Ring	3
26	Ball Holder	1	69	Washer	1
27	Cam Spindle	1	69-1	Rubber Grip	1
28	Bushing	1	70	Planet Gear	3
29	Band	1	71	Planet Gear	3
30	Hammer Case	1	72	Work Spinder	1
31	Adjustment Cover	1	73	Washer	1
32	Cam Ring	1	74	Work Spinder	1
33	Spring Collar	1	75	Pin	6
35	Adjustment Nut	1	76	Spring	1
36	Retainer	1	77	Spring	1
37	Band	1	86	Bit ( Option )	
38	Pin	1	87	Screwdriver	1
39	Hanger	1	94	Retainer	1
40	Gasket	1	95	Retainer	1
41	Screw	1	96	O-Ring	1
42	Pin	1	97	Washer	1
43	Pin	1	TK	Tune-Up Kit ( incl.19 ( 5 ),40,51,52,53,54,55,59 ( 24 ),60 ( 2 ),61,62 ( 4 ),63,66,68 ( 3 ),76,77,96 )	

★ Must be Purchased in Assembly Set

● Recommended not to be purchased alone due to assembly difficult

20140513R3