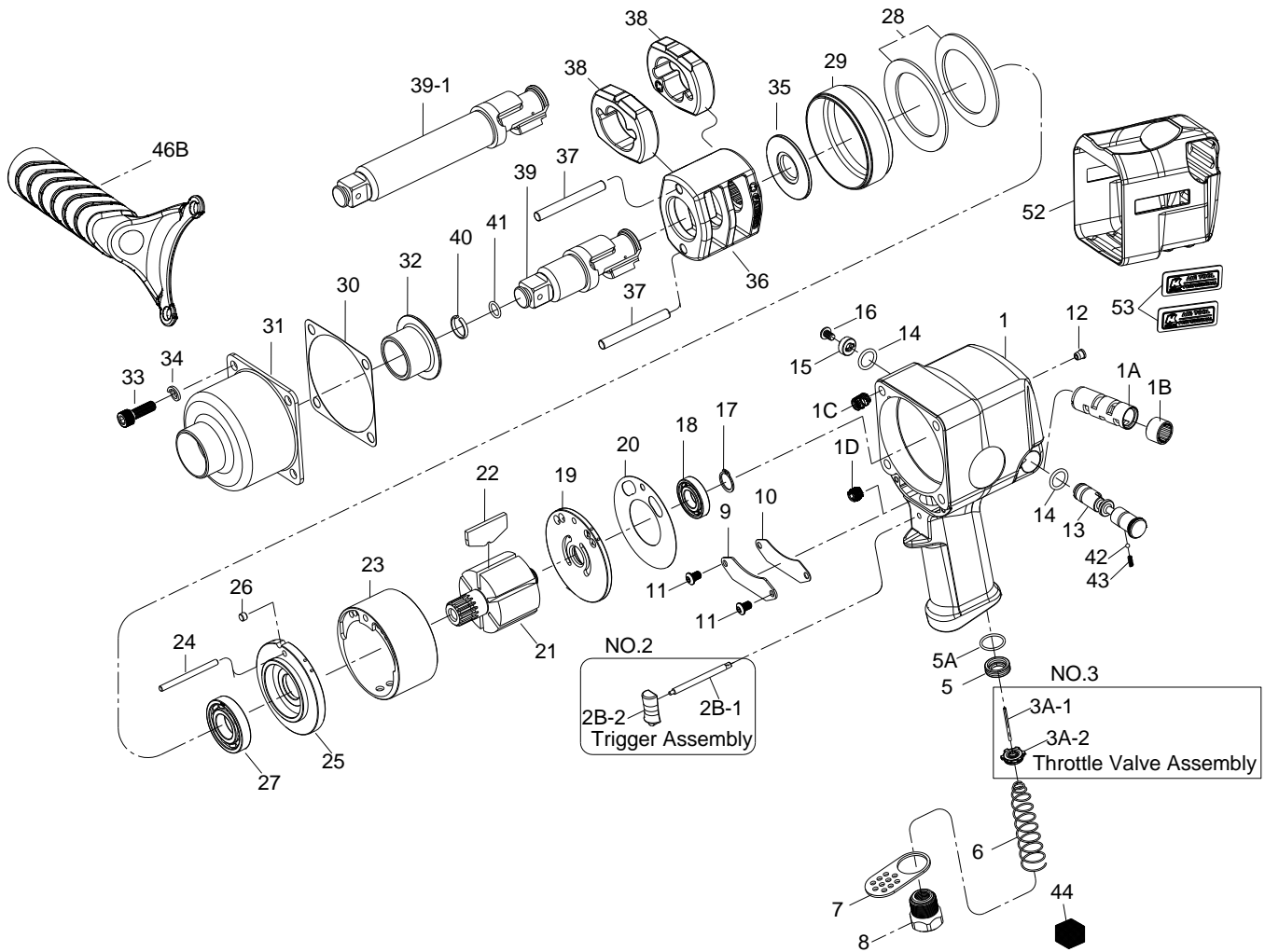


3/4" SQ. DR. SUPER DUTY IMPACT WRENCH



30_30-6

| INDEX NO. | DESCRIPTION | REQ'D NO. | INDEX NO. | DESCRIPTION | REQ'D NO. |
|-----------|--|-----------|-----------|---|-----------|
| ★ 1 | Housing Assembly { incl.1A.1B.1C (4).1D.12 } | 1 | 22 | Rotor Blade | 6 |
| ● 1A | Reverse Valve Bushing | 1 | 23 | Cylinder | 1 |
| ● 1B | Reverse Valve Bushing Gear | 1 | 24 | Cylinder Dowel | 1 |
| ● 1C | Heli-Coil | 4 | ★ 25 | Front End Plate Assembly (incl.27) | 1 |
| ● 1D | Set Screw | 1 | 26 | Pin | 1 |
| ★ 2 | Trigger Assembly (incl.2B-1.2B-2) | 1 | ● 27 | Ball Bearing | 1 |
| ● 2B-1 | Trigger Pin | 1 | 28 | Motor Clamp Washer | 2 |
| ● 2B-2 | Trigger | 1 | 29 | Separator | 1 |
| ★ 3 | Throttle Valve Assembly (incl.3A-1.3A-2) | 1 | 30 | Gasket | 1 |
| ● 3A-1 | Throttle Valve Pin | 1 | 31 | Hammer Case | 1 |
| ● 3A-2 | Throttle Valve | 1 | 32 | Bushing | 1 |
| 5 | Throttle Valve Seat | 1 | 33 | Screw | 4 |
| 5A | O-Ring | 1 | 34 | Spring Washer | 4 |
| 6 | Spring | 1 | 35 | Washer | 1 |
| 7 | Exhaust Deflector | 1 | 36 | Hammer Frame | 1 |
| 8 | Air Inlet | 1 | 37 | Hammer Pin | 2 |
| 9 | Housing Plate | 1 | 38 | Hammer | 2 |
| 10 | Gasket | 1 | 39 | Standard Anvil (for KI-30) | 1 |
| 11 | Screw | 2 | 39-1 | 6" Extended Anvil (for KI-30-6) | 1 |
| ● 12 | Grease Fitting | 1 | 40 | Socket Retainer | 1 |
| 13 | Reverse Valve | 1 | 41 | O-Ring | 1 |
| 14 | O-Ring | 2 | 42 | Steel Ball | 1 |
| 15 | Reverse Valve Knob | 1 | 43 | Spring | 1 |
| 16 | Screw | 1 | 44 | Muffler Element | 1 |
| 17 | Retainer | 1 | 46B | Handle (Option) | 1 |
| ● 18 | Ball Bearing | 1 | 52 | Rubber Grip | 1 |
| ★ 19 | Rear End Plate Assembly (incl.18) | 1 | 53 | Tag | 2 |
| 20 | Gasket | 1 | | | |
| 21 | Rotor | 1 | TK | Tune-Up Kit { incl.5A.6.14 (2).20.22 (6).30.40.41.42.43 } | |

★ Must be Purchased in Assembly Set

● Recommended not to be purchased alone due to assembly difficulty

20130522R1